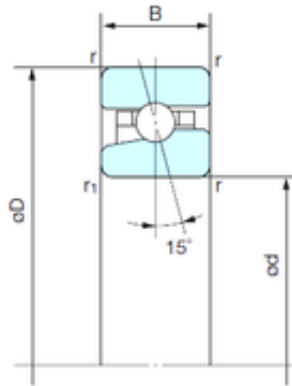




NTN BEARING-SUDAMERICANA, S.A.

120 mm x 180 mm x 28 mm NACHI BNH 024
Angular contact ball bearing



Bearing No. BNH 024

Size	120x180x28 mm
Bore Diameter	120 mm
Outer Diameter	180 mm
Width	28 mm
d	120 mm
D	180 mm
B	28 mm
C	28 mm
Angle (°)	15 °
r min.	2 mm
r1 min.	1 mm
Basic dynamic load rating (C)	63 kN
Basic static load rating (C0)	79 kN
(Grease) Lubrication Speed	8000 r/min

BNH 024 Bearing 2D drawings and 3D CAD models