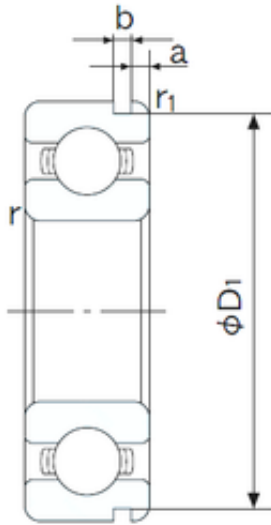




## NTN BEARING-SUDAMERICANA, S.A.



12 mm x 37 mm x 12 mm NACHI 6301N Ball bearing

Bearing No. 6301N

6301N Bearing 2D drawings and 3D CAD models

Size	12x37x12 mm
Bore Diameter	12 mm
Outer Diameter	37 mm
Width	12 mm
d	12 mm
D	37 mm
B	12 mm
C	12 mm
a	2.06 mm
b	1.35 mm
r min.	1 mm
r1 min.	0.5 mm
D1	34.77 mm
Weight	0.060 Kg
Basic dynamic load rating (C)	9,75 kN
Basic static load rating (C0)	4,25 kN
(Grease) Lubrication Speed	19000 r/min
Bore Type	Cylindrical Bore
Enclosure	Open
Configuration	Single Row
Bore Size	12 mm
Outside Diameter	37 mm
Width	12 mm
Fillet Radius/Chamfer	1 mm
r1	0.5 mm



## NTN BEARING-SUDAMERICANA, S.A.

Groove Width	1.4 mm
Groove Diameter	34.8 mm
a (max)	2.1 mm
Dynamic Load Rating	9,750 N
Static Load Rating	4,250 N
Limiting Speed - Grease	20,000 rpm
Limiting Speed - Oil	24,000 rpm
Factor fo	11.2
Radial Clearance	0.003 to 0.018 mm
da (min)	18 mm
Da (max)	31 mm
Dx (min)	42 mm
ra (max)	1 mm
Cy (max)	2.9 mm